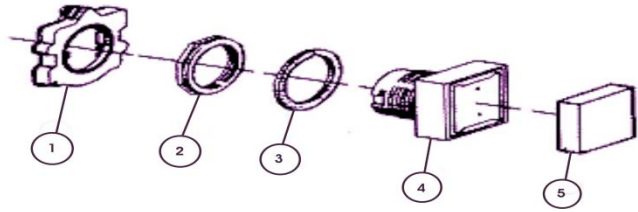


PUSHBUTTONS - WEATHERPROOF

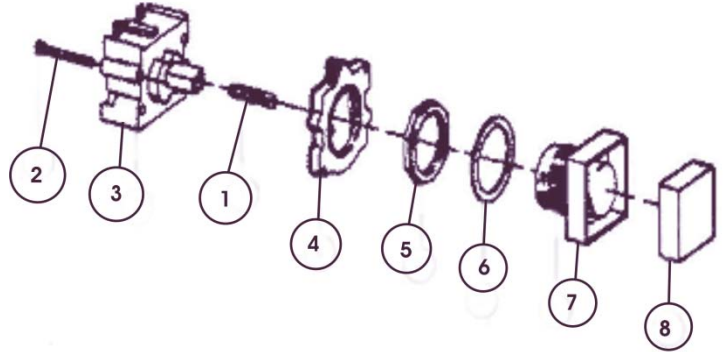
PART NO. FB31-0100

Part No.	Description	Qty
*	Lack Ring	1
*	Retaining Ring	1
*	Gasket	1
*	Housing	1
FB10-1100	Button, Black	1



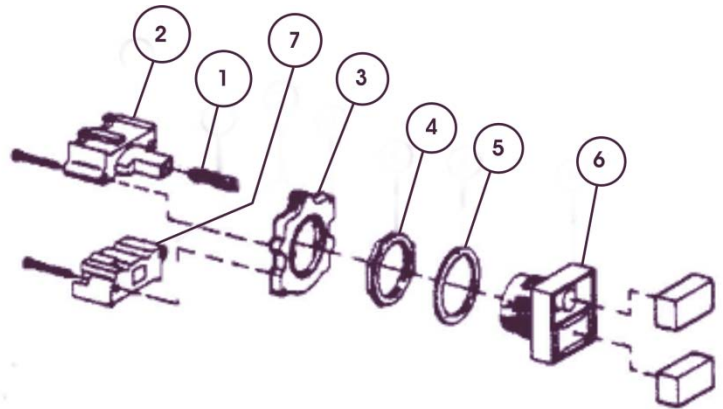
WEATHERPROOF PUSHBUTTON WITHOUT LENS

Part No.	Description	Qty
FB00-5010	28 Volt	
FB00-5001	120 Volt	
FB40-2010	Bulb, 28V Slide	1
FB40-2000	Bulb, 120V Slide	
*	Screw	1
*	Element	1
*	Lock Ring	1
*	Retaining Ring	1
*	Gasket	1
*	Housing	1
	Lens, w/o Engraving	1
FB10-1100	Button, Black	
FB10-4100	Red	
FB10-4200	Green	
FB10-4300	Amber	
FB10-4400	Blue	



WEATHERPROOF PUSHBUTTON / LIGHT WITHOUT CONTACT BLOCK PART NO. FB31-0200, FB31-1200

Part No.	Description	Qty
FB31-1200	28 Volt	
FB31-0200	120 Volt	
FB40-2010	Bulb, 28V Slide	1
FB40-2000	Bulb, 120V Slide	
*	Element	1
*	Lock Ring	1
*	Retaining Ring	1
*	Gasket	1
*	Housing	1
	Lens	1
FB10-2100	Black, Blank	
FB10-2200	Black, Engraved "Close"	
FB10-2300	Black, Engraved "Open"	
FB10-3100	Red, Blank	
FB10-3101	Green, Blank	
FB10-3102	Amber, Blank	
B10-3103	Blue, Blank	



* Items not sold separately